

PATIENT INFORMATION

# When you are taking Suliqua



You have just been prescribed Suliqua (insulin glargine + lixisenatide) in the pre-filled SoloSTAR pen.

In the quick guide you will find information on how to use your SoloSTAR. Further information can be found in the directions for use that come with the SoloSTAR package. You can also call 020-52 68 87 and have your questions about the Sanofi diabetes products answered.

# What Suliqua is and what it is used for

Suliqua is an injectable medication for diabetes that contains two active substances:

- insulin glargine – a type of long-acting insulin that helps to regulate the blood sugar 24 hours a day.
- lixisenatide – a so-called GLP-1 analogue, which helps the body produce its own insulin as a response to blood sugar increases and also causes the sugar from food to be absorbed slower.

Suliqua is used as treatment of type 2 diabetes in adults, to regulate the blood sugar levels when they are too high. It is prescribed together with metformin when other medicines are not sufficient to control your blood sugar levels.

These other medications may include diabetes medicines in the form of tablets (such as metformin, sulfonylurea medicines) or insulin.

If you use another diabetes medicine, talk to your doctor about whether to stop taking that medication when you start using Suliqua.



# Potential side effects

## **What side effects can I get from insulin treatment?**

Depending on various causes, you may have too much insulin in relation to the amount of sugar present in your blood. You will then get a lower blood sugar than normal (< 3.5 mmol/l). This is called insulin sensitivity.

### **Common characteristics:**

- Jitters
- Feelings of hunger
- Sweating
- Palpitations
- Impaired concentration
- Vision disorder
- Irritation/Aggressivity
- Asthenia

### **Causes of insulin sensitivity can be:**

- Meal delay
- Too little food
- Too much insulin and/or blood sugar lowering tablets

- Physical activity/exercise (greater or longer than estimated)
- Alcohol

To increase blood sugar and remove a sensation you should always eat something. What increases blood sugar the fastest is dextrose, a glass of plain juice or something else sweet. Blood sugar 3.0-4.0 mmol/l with clear symptoms is treated with dextrose, 1/2-1 dextrose tablet per 10 kg body weight. Drink water for faster absorption.

If it takes time before you will be eating a meal, you may need an extra snack. The sensation does not relieve faster because you eat a greater amount of food. An important rule when taking insulin treatment is to always carry dextrose with you.

# How to use Suliqua

Always use this medication according to your doctor's instructions. Your doctor may tell you to use another dose compared to your previous insulin dose. Consult a doctor, pharmacy staff or a nurse if you are have questions.

Depending on your lifestyle, the result from your blood sugar test, and your previous insulin treatment, your doctor will tell you:

- How much Suliqua you will need every day and at what time of day.
- When to check your blood sugar level.
- When you may have to increase or decrease the dose.

Your doctor may recommend that you use Suliqua together with other medications for high blood sugar.

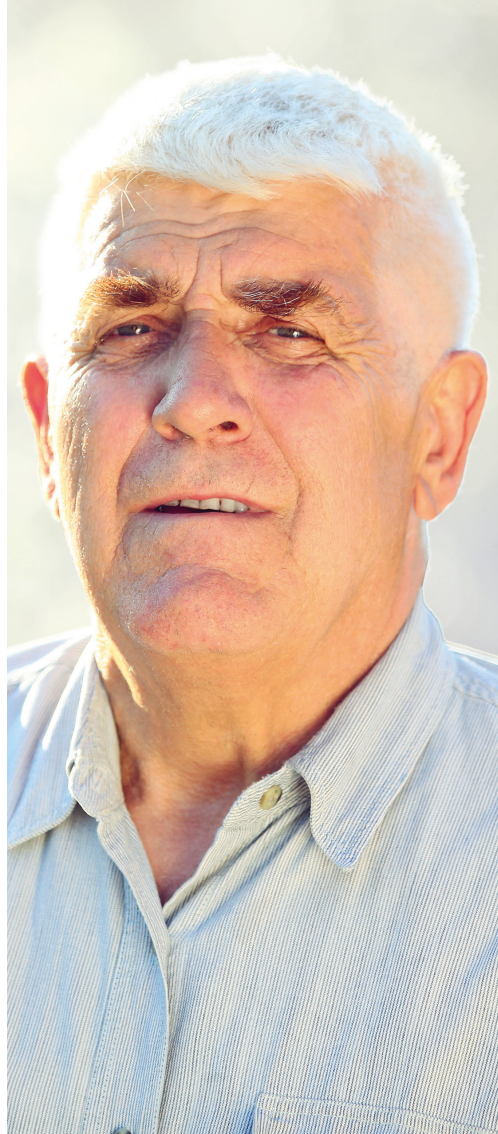


# How much you should use

Suliqua 100 units/ml + 33 micrograms/ml pre-filled injection pen:

- This pen provides doses from 30 to 60 doses in one injection, in steps of singular dose steps.
- Each incremental step you twist forward contains 1 unit of insulin glargine and 0.33 micrograms of lixisenatide.

Your Suliqua dose is given as incremental steps. The dose window on the injection pen shows the number of incremental units of Suliqua to be injected. Do not inject a dose larger than 60 dose steps.



# When to inject Suliqua

Use Suliqua **once** daily, within one hour before a meal. It is preferable to inject Suliqua before the same meal every day, when you have chosen the most suitable meal, preferably breakfast. Inject Suliqua in your stomach or the outside of the thigh. Do not forget to vary injection sites.

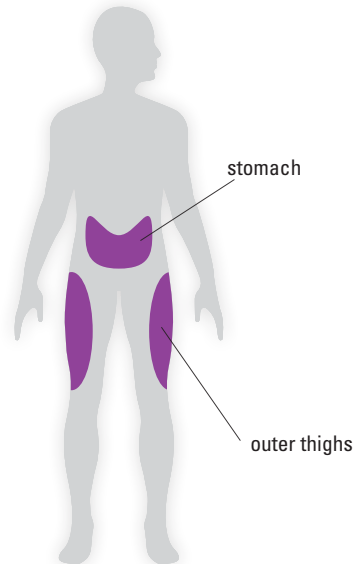
## Before you inject Suliqua

- Follow the instructions in this brochure and the summary of product characteristics that comes with the package.
- If you do not follow all instructions you may get too much or too little Suliqua.

To avoid mistakes: Always check the medication carton and the label on the injection pen before each injection to ensure that you have the correct pen. This is especially important if you use more than one injection medication. Ask a doctor or pharmacy staff if you have questions.

## If you have used too much Suliqua

If you have injected too much Suliqua, your blood sugar level may become low (hypoglycaemia). Check your blood sugar and eat more food to prevent your blood sugar from becoming too low.

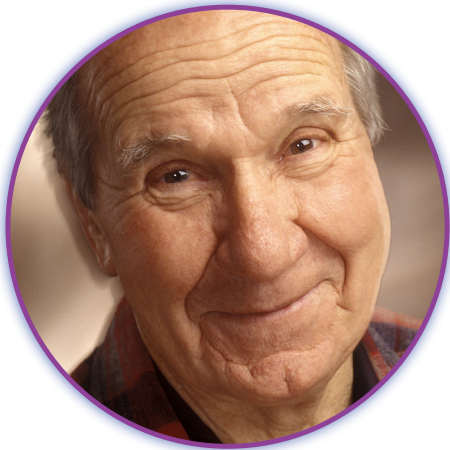


# When to inject Suliqua

## **If you have forgotten to use Suliqua**

If you have forgotten a dose of Suliqua, or if you have not injected a sufficient dose, your blood sugar level may become too high (hyperglycaemia). If needed, Suliqua can be injected before the next meal.

- Do not inject a double dose to make up for a forgotten dose.
- Do not take two injections per day.
- Check the blood sugar and then inject the next dose at your regular time.





# How to store Suliqua

Store this medication out of sight and out of reach from children.

Use before the expiration date that is stated on the package and on the pen's label after "EXP". The expiration date is the last day of the stated month.

## **Before first use**

Store in refrigerator (2°C-8°C). Do not freeze or store in direct contact with a freezer compartment or cooling block. Keep the pen in the outer carton as it is sensitive to light.

## **After first use/spare pens**

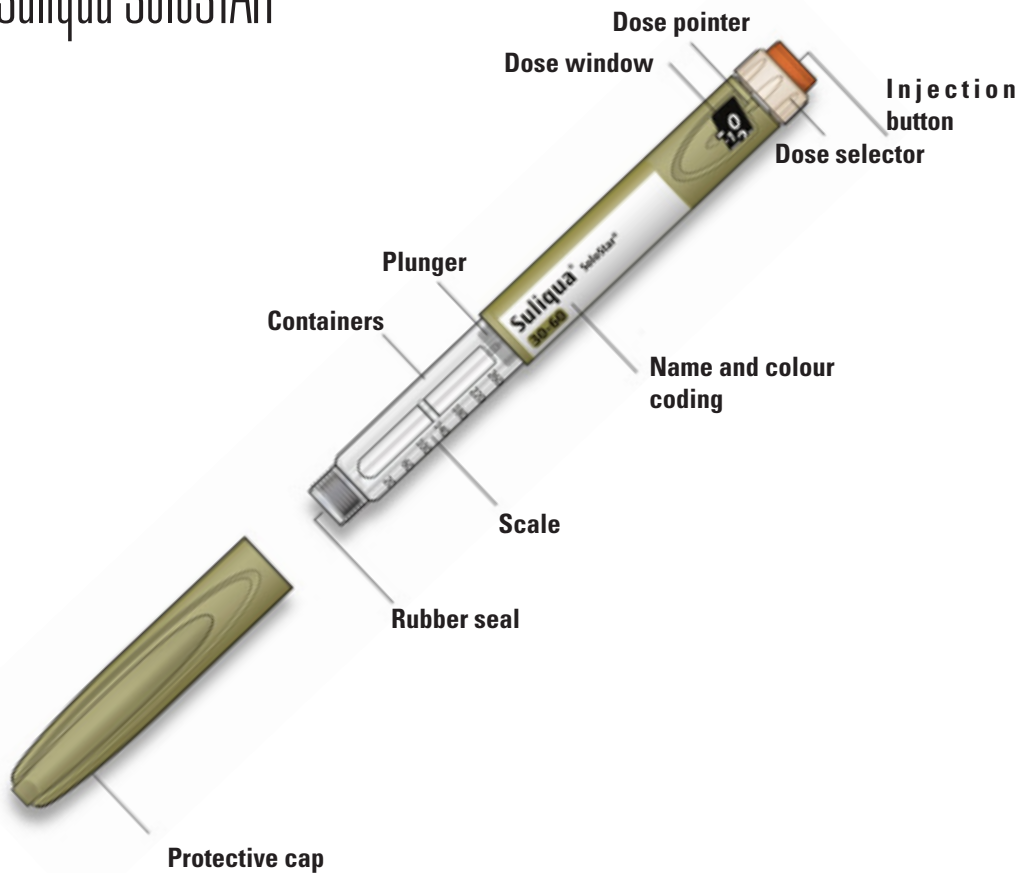
The injection pen can be stored for a maximum of 28 days outside of a refrigerator, but at a maximum of 25°C. Discard the pen after this time period.

Must not be put back in refrigerator and must not be frozen. Store the injection pen away from direct heat or direct sunlight. The protective cap must be put back on the injection pen after each injection.

Do not leave the injection pen in a car on an extremely hot or cold day. Do not store the injection pen with the needle attached.

Medications must not be discarded in sewers or in household waste. Ask your pharmacy staff how to discard medicines that are no longer used. These measures are intended to protect the environment.

# Suliqua SoloSTAR



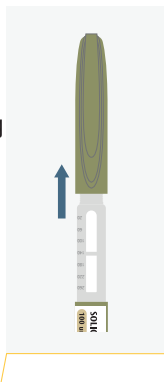
Setting is done with one unit at a time.

# How to start with Suliqua

- 1 Make sure you have the correct medication.  
Suliqua is an olive-coloured pen with a brown injection button.

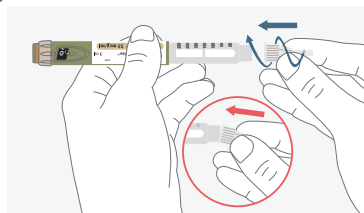


- 2 Remove the protective cap and make sure the drug is transparent.



# Attach the needle

- 3 Attach a new needle. Screw or tap on the needle depending on the needle you are using.



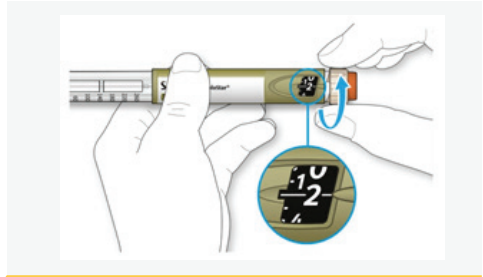
- NOTE!**
- Do not set the dose or push the injection button without the needle attached.

# Do a safety test

4

Select a dose of 2 units by turning the dose selector clockwise.

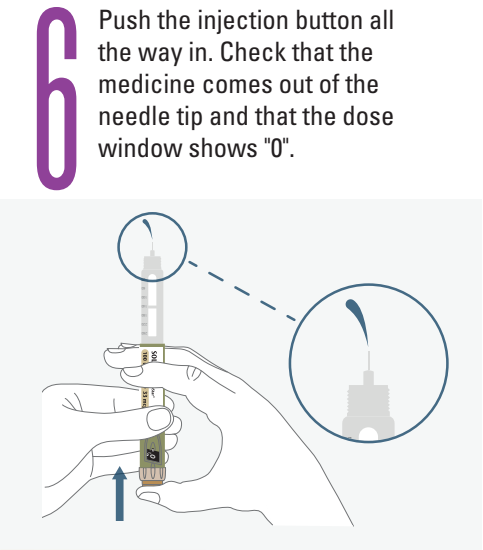
Remove the outer and inner needle covers.



5

Hold the pen with the needle up.

Remove any air bubbles by snapping your finger against the container.

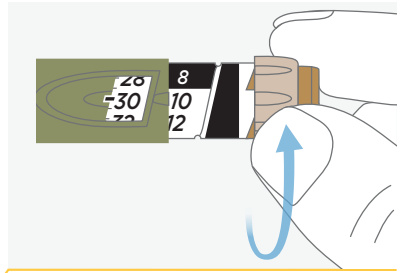


6

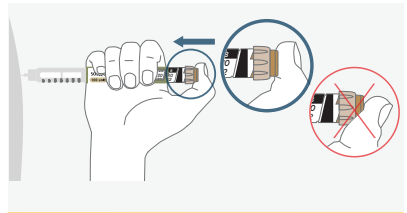
Push the injection button all the way in. Check that the medicine comes out of the needle tip and that the dose window shows "0".

# Set the dose and inject

**7** Set your chosen dose. If you rotate past the unit you are about to inject, simply turn back to the correct unit.



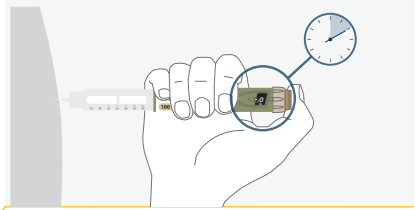
**8** Inject your dose as your diabetes nurse or doctor has taught you. Insert the needle into the skin and push the injection button all the way down to the bottom. As you inject, the dose window counts down to “0”.



# Set the dose and inject

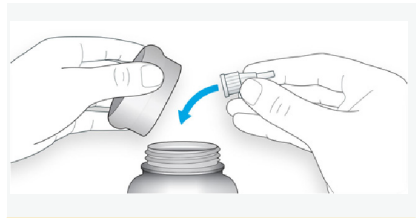
9

Keep the injection button pressed in the depressed position while counting to 10. Then pull the needle out.



10

Attach the outer needle cap and unscrew the needle. Discard the cannula that you have been prescribed. Put on the protective cap of your SoloSTAR pen and store it safely.



## **NOTE!**

Always remove the needle after an injection and store the SoloSTAR pen without a needle. This helps prevent contamination, air bubbles and insulin leakage.

# Keep in mind



## Store properly

### Before first use

- Store new SoloSTAR pens in the refrigerator, in the dark and cold (**2°C to 8°C**) in the package.
- **Do not** freeze.

### After first use

- Store the SoloSTAR pen at room temperature, **at a maximum of 25°C**.
- Always **remove** the needle after an injection.
- **Store** the SoloSTAR pen without a needle. This helps prevent contamination, air bubbles and insulin leakage.
- **Protect** the SoloSTAR pen from sunlight and heat.

- **Store** the Solostar pen with the protective cap on.
- **Use** the Solostar pen at most for **4 weeks** after the first use.

### Handle the pen with care

- If you think your pen may be damaged, do **not try** to fix it. Use a new SoloSTAR pen.

### Disposal of the pen

- **Remove** the needle before disposing of the SoloSTAR pen.
- **Discard** the SoloSTAR pen in accordance with current procedures.

**If you have questions** about your SoloSTAR, feel free to call us at 020-52 68 87.



Questions about our diabetes products:

020-52 68 87

[insulin.se](http://insulin.se)

You can find more information about diabetes at [insulin.se](http://insulin.se)

You can also read about various diabetes products at [fass.se](http://fass.se). An instructional films on how to use the pen can be found at [medicininstruktioner.se](http://medicininstruktioner.se)

**Please read the information leaflet carefully.**



[sanofi.se](http://sanofi.se)